



LPCW-100

CD/DVD label printer application version 2.0

For Windows®

User's Guide

- We recommend that you print on a disc* before you record anything on it. Printing on a disc that already has data recorded on it can cause the data to become corrupted.
- Note that TDK Recording Media Europe S.A. shall not be held liable for any loss or corruption of data on discs arising through the use of this product.

* CD-R, CD-RW, DVD-R, etc.

Be sure to read the Safety Precautions contained in printer manual before trying to use the printer and this application for the first time.

Important!

The copyright of this User's Guide and all rights related to the software shall revert to CASIO COMPUTER CO., LTD.

- Microsoft, Windows, Windows Media and Windows NT are registered trademarks or trademarks of Microsoft Corporation in the United States and other countries.
 - Pentium is a registered trademark of Intel Corporation in the United States.
 - Macintosh, Mac OS and TrueType are registered trademarks of Apple Computer, Inc. in the United States and other countries.
 - Easy CD Creator is a trademark of Roxio, Inc. in the United States.
 - Other company and product names used herein may also be company and product names of others.
- © Copyright 2003 CASIO COMPUTER CO., LTD. All rights reserved.
- Be sure to read this manual carefully before attempting to use the product for the first time.

Read This First!

- TDK Recording Media Europe S.A. shall not be held liable for any loss or claims by you or any other person or entity that may arise through the use of this product.
- Reproduction of this manual in any form, either in part or its entirety, is forbidden without the express permission of CASIO COMPUTER CO., LTD. You are granted permission to use this software for your own personal use. Any and all other use of this software without the express permission of CASIO COMPUTER CO., LTD. is forbidden under international copyright laws.
- The contents of the manual are subject to change without notice.
- Due to the time required for printing on paper, contents of the manual may be outdated by the version of software supplied to you. Because of this, the software and the contents of the displays it produces may be different from those described in this manual, or some items described in this manual may no longer be available.

- The CD/DVD LABEL PRINTER application is an application designed to run under Windows 98, 98SE, Me, 2000 Professional, or XP.
- This CD/DVD LABEL PRINTER application is designed for use with the TDK LPCW-100 Printer. It does not support printing with the LPCW-50 printer.
- The application may not be able to run correctly on certain system hardware and software configurations.
- See the printer User's Guide for details about its minimum computer system requirements.

Contents

| | |
|--|----------|
| About the Bundled CD-ROM and CD-R | 4 |
| Scope of This Manual | 5 |
| Button Operations | 5 |
| How to use this Manual | 7 |
| LPCW-100 Printer Features | 8 |

Label Making Overview

| | |
|--|-----------|
| Label Creation Basics | 12 |
| To create a label | 12 |
| To print a label | 16 |
| To save label data | 19 |
| To quit the CD/DVD LABEL PRINTER application | 19 |

Label Making with Preset Templates

| | |
|--|-----------|
| Automated Label Layout | 20 |
| Using the Assistant Feature | 22 |
| Using the Assistant Screen | 22 |
| Using the Main Window | 23 |

| | |
|---|-----------|
| Importing Text Data | 26 |
| Importing CD-Text Data for a Music Label | 26 |
| Importing Media Player Data for a Music Label | 27 |
| Importing Easy CD Creator Data for a Music Label | 29 |
| Importing File and Folder Name for a Data Label or Digital Image Label | 30 |
| Importing Data Created with a Previous Version | 31 |

Useful Text Input Functions

32

Saving Label Data

33

Opening a Label Data File

34

Creating a Data Index File

35

Configuring Layout Settings

36

 To configure layout settings

 Configuring Text Layout Settings

Configuring Font Settings

39

Inserting an Image into a Label

41

 To input an image from a file

 Capturing a PC Screen Image

 Controlling the Aspect Ratio of an Image

 About color images... ..

Original Label Making

Creating an Original Label Layout

46

 Free Text Label Template Main Window

 Free Design Label Template Main Window

 Free Design and Free Text Template Main Windows

 Toolbars

| | |
|--|-----------|
| Configuring Font Settings (Free Text Template, Free Design Template) | 50 |
| Inserting a Label Background Image (Free Text Layout) | 51 |
| Fields (Free Design Template) | 52 |
| Field Types | 52 |
| Common Text Field and Image Field Operations | 52 |
| Inputting Text into a Text Field (Free Design Template) ... | 53 |
| To input text manually | 53 |
| To input text imported from a file | 53 |
| To configure font settings for the text in a field | 54 |
| To delete a text field | 54 |
| Inserting an Image into a Label (Free Design Template) | 54 |
| To insert an image into a label | 54 |
| To delete an image field | 54 |
| Resizing a Field (Free Design Template) | 55 |
| Aligning and Resizing Fields (Free Design Template) | 56 |
| To align fields | 57 |
| Configuring Field Properties (Free Design Template) | 58 |
| To reposition and resize a field | 58 |
| Useful Text Input Functions (Free Text Template, Free Design Template) | 59 |

Other Operations

| | |
|--|-----------|
| Configuring Advanced Settings | 61 |
| To configure advanced print settings | 61 |
| Registering and Deleting a Phrase Memory Entry | 62 |
| To configure advanced layout settings | 63 |
| Using Help | 64 |
| To use Help | 64 |
| Phrase Library List | 65 |
| Troubleshooting | 65 |
| Error Messages | 67 |

About the Bundled CD-ROM and CD-R

Handling Precautions

- Handle the disc to avoid finger smudges, dirt, scratches, etc. on either of its surfaces.
- Should the disc become dirty, use an eyeglass cleaning cloth or some other soft dry cloth to wipe it lightly from the center of the disc outwards towards its edge. Never use phonograph record cleaner or any other cleaning agent.
- Never write on either of the disc's surfaces with a pen or pencil or other sharp writing utensils, or affix a sticker to the disc surfaces.
- Use of a disc that is cracked or deformed, or a disc that has adhesive on it is dangerous. Never use such a disc.

Storage Precautions

- Avoid storing discs in areas subjected to high temperature, high humidity, or direct sunlight.
- When you are not using a disc, store it in its original case.
- Avoid storing a disc so its label comes in direct contact with the surface of a vinyl case, bag, etc.

Warning!

Never play a CD-ROM disc on any device that is not specifically designed to play back CD-ROM discs. Audio output at a high volume setting creates the risk of damaged hearing and damage to audio speakers.

Scope of This Manual

This manual does not cover standard Windows operations.

This manual covers operating procedures for the CD/DVD LABEL PRINTER application only. It does not include any detailed information about standard Windows operations like the following.

- Clicking, double-clicking, right-clicking, dragging, dropping, and other mouse operations
- Menu operations
- Text on the keyboard
- Standard window operations

For information about these and other Windows operations, see the user documentation that came with your Windows operating system.

Using the Assistant Feature

The CD/DVD LABEL PRINTER application has an Assistant feature that guides you step-by-step through certain operations. (See page 22.)

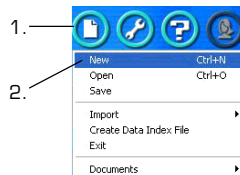
Help

You can access information about procedures and precautions using the CD/DVD LABEL PRINTER application's Help feature. (See page 64.)

Button Operations

All operations in this manual are performed using the mouse.

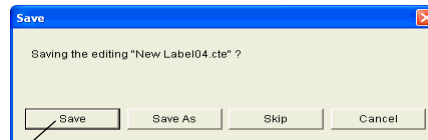
- Command operations are indicated as shown below.



1. Click the  button.

2. On the menu that appears, click **New**.

- Dialog box button operations are indicated as shown below.



- 3.

3. Click **Save**.

- All of the sample screens in this manual show operation under the English version of Windows XP. Screens appear differently when running the application under another operating system.
- Note that the screen images shown in this manual may differ somewhat from those that actually appear on your computer screen.

How to use this Manual

The sections of this manual are arranged as shown below. Refer to the indicated pages for details.

Getting Ready

- Installing the CD/DVD LABEL PRINTER application



- For information about installing the CD/DVD LABEL PRINTER application and connecting the printer to your computer, see the printer User's Guide.

Label Making Overview (page 12)

- This section takes you through the basic label creation and printing process, using a music CD label as an example.

Label Making with Preset Templates

Automated Label Layout (page 20)

- This section describes how to create labels quickly and easily using preset templates.
- You can select a music label, data label, or digital image label template.

Original Label Making

Creating an Original Label Layout (page 46)

- This section describes how to layout text and images to create exactly the type of look you want.
- A Free Text label template gives you wide ranging control over text you input into a label.
- A Free Design label template provides you with maximum freedom when creating your label design.

Troubleshooting Guide (page 65)

- Check this section whenever you run into problems.
- Here you will find details about online help and error messages.

Printing and Other Operations

Printing (page 16)

This section explains how to print a completed label.

- Simply place the disc onto the tray as instructed by the message that appears on the screen.

Other Operations (page 61)

This section provides details about other settings.

LPCW-100 Printer Features

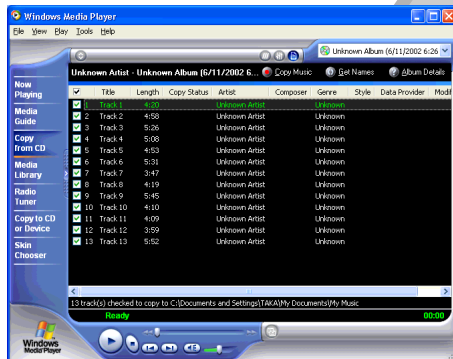
After using this CD/DVD LABEL PRINTER application to create the labels you want, you can connect your printer to your computer and print them.

• Music Discs

Labels can include artist names and track titles (page 20).

You can also import track names from Windows Media™ Player, or Easy CD Creator, or you can import CD-Text from a CD (page 26).

- Screen shots shown in this manual are based on Media Player for Windows XP.



Important! This printer and its software do not include functions for recording to a CD-R, CD-RW or other types of discs.

• Data Discs

You can import the names of folders and files you plan to store on a disc and print them on its label. You can also type in information manually (pages 20 and 30).

Profile data

Domestic business situation Operation flow

Organization chart Business report
New employees research data New order
Operation list (Answer : Admin) Business trip report
Turnover improvement Holiday work
Weekly meeting summary Counter error data

Profile data

DOMESTIC BUSINESS SITUATION OPERATION FLOW

ORGANIZATION CHART BUSINESS REPORT
NEW EMPLOYEES RESEARCH DATA NEW ORDER
OPERATION LIST (ANSWER : ADMIN) BUSINESS TRIP REPORT
TURNOVER IMPROVEMENT HOLIDAY WORK
WEEKLY MEETING SUMMARY COUNTER ERROR DATA

• Digital Image Discs

You can import recording dates and image descriptions from your PC and print them on the label. You can also type in information manually (pages 20 and 30).

Bobby's Childhood

7/25/2002 - 7/25/2002 Welcome home
9/30/2002 - 9/30/2002 At the park
12/31/2002 - 12/31/2002 Daddy and Bobby

7/25/2002 - 7/31/2002 Mommy and Bobby
8/16/2002 - 8/16/2002 In the Water
8/30/2002 - 8/30/2002 At camp
9/15/2002 - 9/15/2002 The moonlight night and Bobby

Bobby's Childhood

7/25/2002 - 7/25/2002 Welcome home
9/30/2002 - 9/30/2002 At the park
12/31/2002 - 12/31/2002 Daddy and Bobby

7/25/2002 - 7/31/2002 Mommy and Bobby
8/16/2002 - 8/16/2002 In the Water
8/30/2002 - 8/30/2002 At camp
9/15/2002 - 9/15/2002 The moonlight night and Bobby

LPCW-100 Printer Features

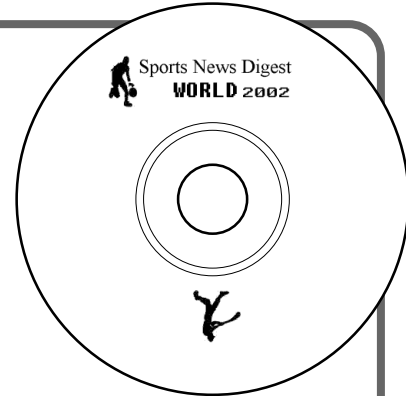
- Print with TrueType® fonts installed on your PC (page 39).
- Support for both text and images (page 41). Note that images are printed in monochrome.



- A collection of preset templates lets you produce great looking labels with minimum effort.



- A Free Text Template allows more control over the appearance and layout of text (Free Text → page 46).



- A Free Design template gives you almost total freedom for laying out text and images to create exactly the look you want (Free Design → page 46).



Label Creation Basics

After you install the CD/DVD LABEL PRINTER application, connect the printer to your computer, and load an ink ribbon cassette into the printer, * you can perform this operation in this section to actually print a label. This section takes you through the basics of label making, from layout, to printing and storage.

* See the printer User's Guide for information about how to load an ink ribbon cassette.

Example: Music CD label



To create a label

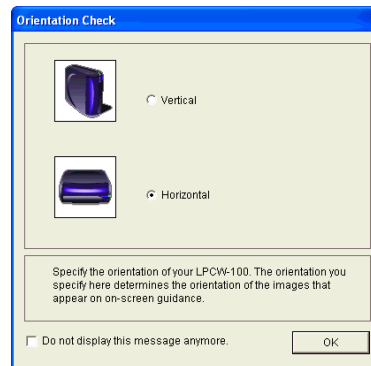
1. On your Windows desktop, double-click the **CD DVD LABEL PRINTER LPCW-100** short cut icon.



Note

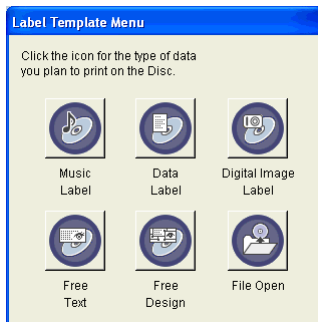
You can also start up the application by clicking the Windows **Start** button and then **All Programs**. Next, point to **TDK**, and then click **CD DVD LABEL PRINTER LPCW-100**. Note that the location of the application may be different on your computer, depending on what you specified when you installed it.

This starts up the CD/DVD LABEL PRINTER application and displays a dialog box for specifying the orientation of the printer.



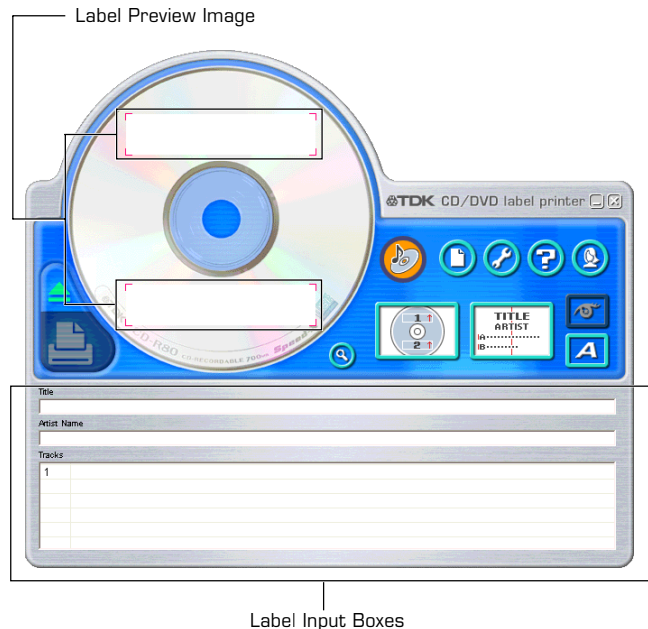
2. Select the "Vertical" or "Horizontal" option, and then click **OK**.

- This starts up the CD/DVD LABEL PRINTER application and then displays a label template selection menu.
- Use the Advanced Settings dialog box (page 61) to control whether or not the printer orientation dialog box appears each time you start up the CD/DVD LABEL PRINTER application.



3. Click .

This displays the main window for the music label template.



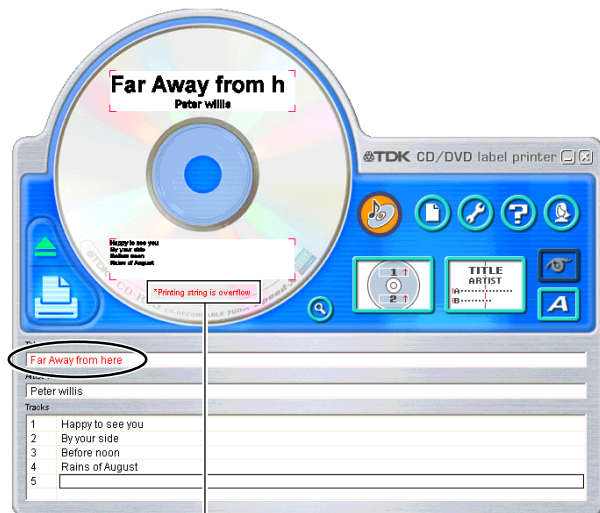
Important!

You must select a label template before you can perform operations on the main window.

4. Input the text data you want.

Move the cursor to the label input boxes, and then type in the disc title, artist names, and track names.

The text you input appears in the preview image on the screen.



Warning message

Important!

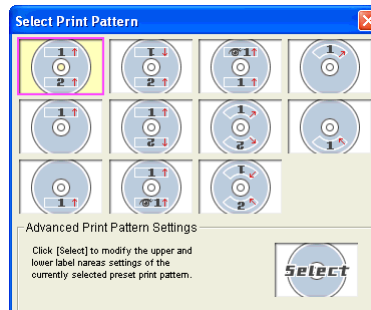
The warning message “Printing string is overflow” appears when the text data you input does not fit inside the print area.

See “Configuring Text Layout Settings” (page 37) and “Configuring Font Settings” (page 39) for information about adjustments you can make to help the text fit.

Configuring Template Setting

5. Click .

This displays a dialog box for selecting the print pattern.



Note

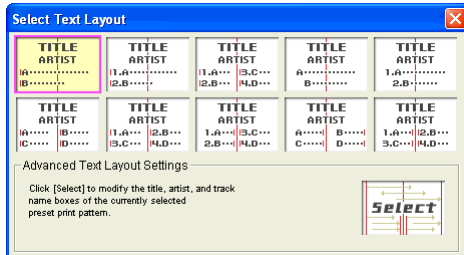
See page 36 for details about print pattern setting.

6. Click .




7. Click .

This displays a dialog box for selecting the text layout.



Note

See page 37 for details about changing the text layout pattern.

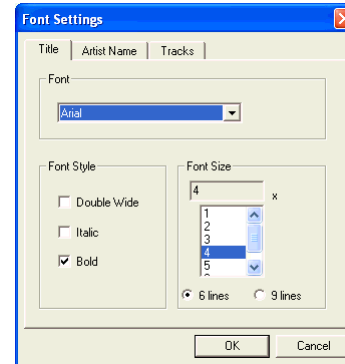
8. Click .



Selecting a Font

9. Click .

This displays a dialog box for making font settings.

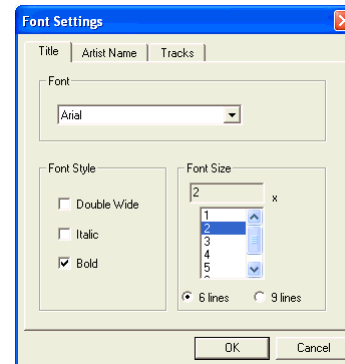


10. Confirm that **Title** tab is selected.

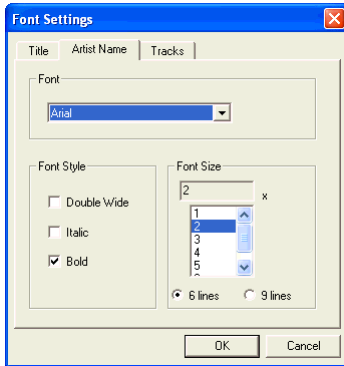
Note

If a different tab is displayed, click **Title**.

11. For **Font Size**, select **2**.



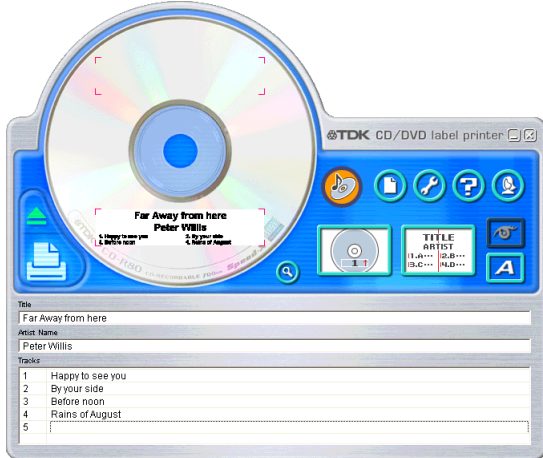
12. Click the **Artist Name** tab.



13. Select **2** for **Font Size**, and then click **OK**.
This completes input of the label data.

Note

See page 39 for details about font settings.



To print a label

Important!

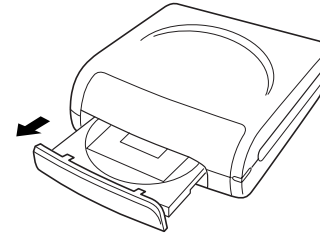
- See the separate “Quick Start Guide” sheet for important information about printing conditions.
- Do not try to use this printer to print on a mini CD-R or a CD-R business card. Doing so can damage the printer. Use the printer to print on 12cm discs only.
- We recommend that you print on a disc before you record anything on it. Printing on a disc that already has data recorded on it can cause the data to become corrupted.

1. Connect the printer to your computer.

- For information about connecting the printer to your computer, see the printer User's Guide.

2. Click .

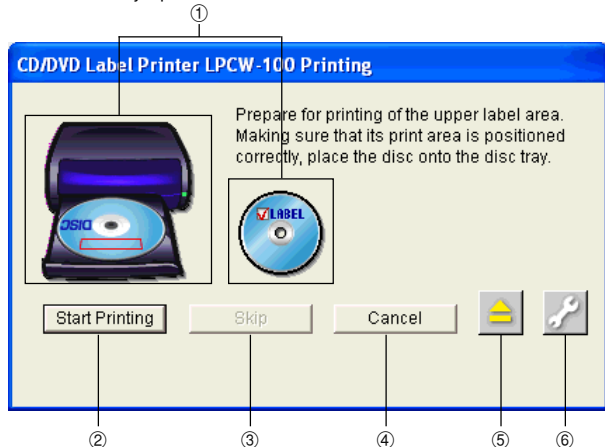
- This causes the disc tray to open.



Important!

- Make sure there is nothing in front of the printer to interfere with the movement of the disc tray.
- Note that the disc tray will not open automatically if you have “Manually open disc tray before printing” selected under **Auto Disc Tray Operation Setting** on the **Print** tab of the Advanced Settings dialog box (page 61).

- The dialog box shown below appears on your computer screen when the disc tray opens.



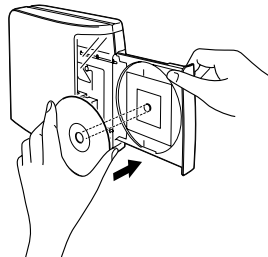
① Shows how the disc should be oriented when placed on the disc tray.

Note

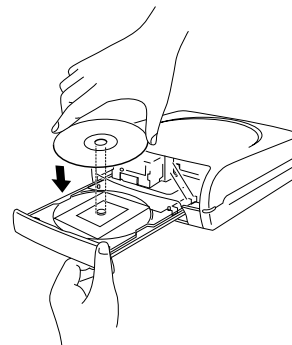
- You can specify the vertical/horizontal configuration of your printer using the **Printer Orientation** setting on the **Print 2** tab of the Advanced Settings dialog box (page 61).
- ② Click to start printing.
 - ③ Click to skip the upper label area printing and perform lower label area printing.
 - ④ Click to cancel printing.
 - ⑤ Click to open or close the disc tray.
 - ⑥ Click to display a dialog box for configuring printing, phrase memory, and other settings (page 61).

3. Place the disc onto the disc tray.

- **Placing a disc onto the tray when the printer is standing up vertically**



- **Placing a disc onto the tray when the printer is laid down horizontally**



- Place the disc onto the disc tray with the recording side of the disc facing the tray. Press down lightly until you hear the disc click into place. When placing the disc onto the tray, use your hand to hold the disc tray still.

Important!

- Do not apply excessive pressure against the tray when placing a disc on it.
- Check to make sure that there is no dirt or other foreign matter on the disc or tray. Closing the tray while there is foreign matter present can damage the recording surface of the disc and make recording on it impossible.
- Make sure that the disc is facing properly. If the recording side of the disc is facing away from the tray, the printer will print on the recording side, which will make it impossible to record data onto the disc.

Printing on a disc that already has something printed on it

This printer will not print properly over a logo or other printing that is already on a disc. For such a disc, you will need to use the printer's built-in printing guide to make sure that printing is performed in the correct location.

- 1 Pull the printing guide from the printer.

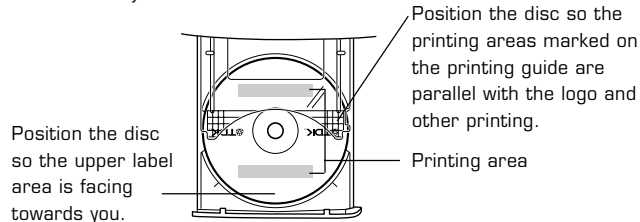
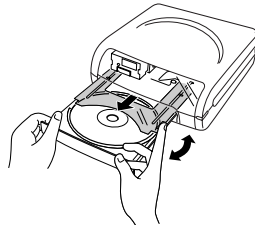
Note

You do not need to use the printing guide if the disc you are printing on does not have anything printed on it.

- 2 Adjust the position of the disc.


Important!

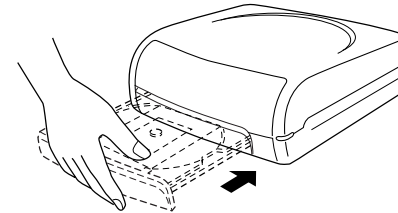
- Pressing in on the disc tray or pressing the eject button while adjusting the position of the disc will cause the disc tray to close. When adjusting the disc position, use your other hand to hold the disc tray still.



- If you want to print only in the lower label area, position the disc so the upper label area is facing towards you.
- For more information, see the separate "Quick Start Guide".

4. Close the disc tray.

- Press in lightly on the tray, press the **Eject** button, or click the  button on the CD/DVD LABEL PRINTER application screen.



Important!

- Take care to avoid catching your fingers or hand in the disc tray when closing it.

5. Click **Start printing**.


- This starts the printing operation.
- The disc tray will open automatically after printing is complete. When this happens, remove the disc from the tray.

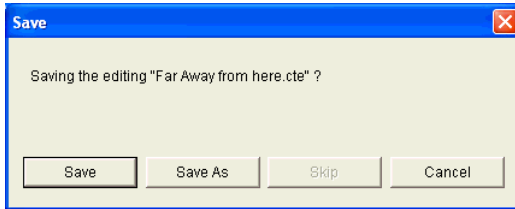
Important!

- Never disconnect the printer's AC adaptor power cord or the USB cable while printing is in progress. Doing so can cause malfunction of the printer.

This completes the printing operation.

To save label data

1. Click .
2. On the menu that appears, click **Save**.




3. Check the file name and then click **Save**.
The label data is saved in your Windows My Documents folder.


Note

See page 33 for details about saving label data.

To quit the CD/DVD LABEL PRINTER application

1. Click .
2. On the menu that appears, click **Exit**.

Note


You can also quit the application by clicking the  button in the upper right corner of a main window.

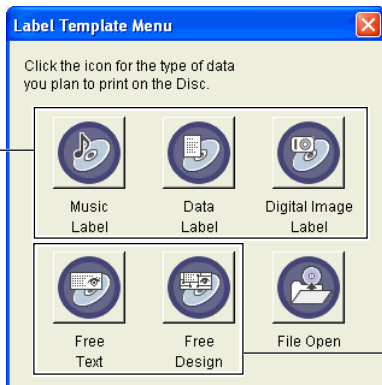
Important!

You cannot quit the application while a print operation is in progress. Wait until printing is finished before you quit.

Automated Label Layout

A selection of content-specific preset label formats makes label creation as easy as selecting the right format and filling in the blanks. The following procedure shows how to do this, using the music label template as an example.

1. On the main window, click .
2. On the menu that appears, click **New**.
This displays a dialog box for selecting the label template.

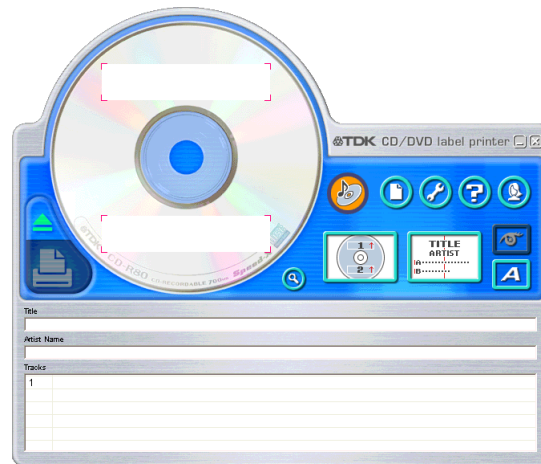


Select one of these preset templates for easy label creation.

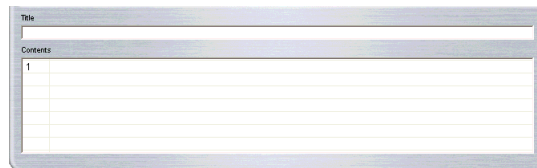
Select one of these templates to create an original layout (page 46).

3. Click the label template you want to use.
 - You can select from among five label templates. Selecting a template displays its main window, which contains the elements for the template you select.
 - Input the text you want.

Music Label



Data Label





Digital Image Label

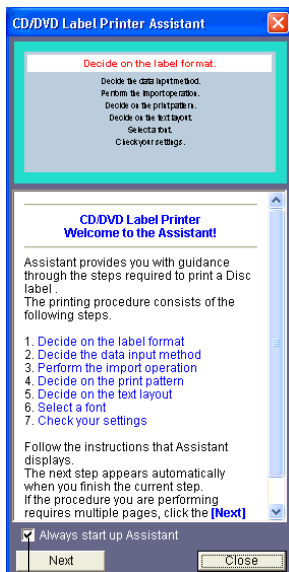
The screenshot shows a software window titled "Title" with a text input field. Below it is a table with three columns: "Date", "Location", and "Image Information". The first row of the table contains the number "1".

| Date | Location | Image Information |
|------|----------|-------------------|
| 1 | | |
| | | |
| | | |
| | | |
| | | |
| | | |
| | | |
| | | |
| | | |

- If you want to create your own original layout, select the Free Text or Free Design template. See “Creating an Original Label Layout” on page 46 for more information.

Using the Assistant Feature

The Assistant feature provides you with step-by-step guidance for creating labels and performing other operations. The Assistant screen does not appear while the Free Text or Free Design label template is displayed.



When this option is selected, the Assistant screen appears whenever you start up the CD/DVD LABEL PRINTER application.

Using the Assistant Screen


When you are unsure of CD/DVD LABEL PRINTER application operations...


Follow the instructions on the Assistant screen for quick and easy labels.

Even after you are accustomed to making labels...

Since the Assistant screen changes in accordance with the operation you are performing on the main window, you can refer to it whenever you need a bit of advice.

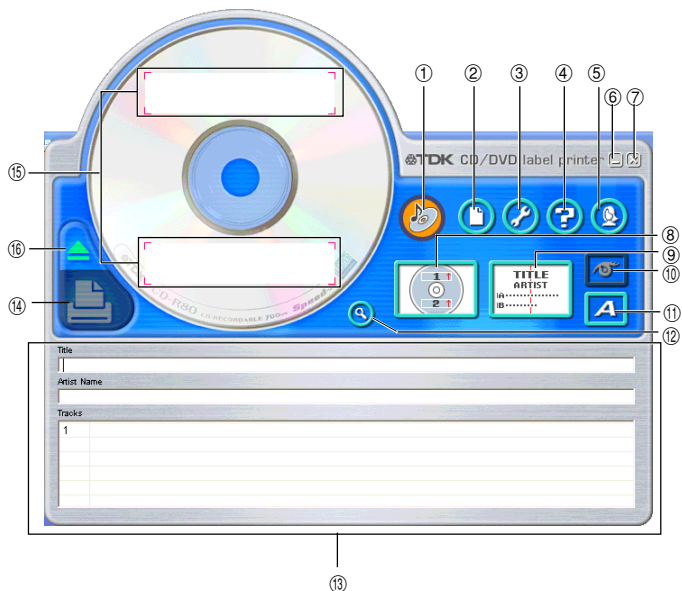
Displaying the Assistant Screen

Selecting the "Always start up Assistant" checkbox causes Assistant to start up automatically whenever you start up the CD/DVD LABEL PRINTER application. If you do not have the checkbox selected, you need to click the  icon on the main screen to display Assistant information for the operation you are currently performing.

- Click the **Next** button to advance to the next screen.
- To quit Assistant, click the  button.


Using the Main Window

The information in this section describes the main window for the music label template.




① Label Format Indicator


The icon that appears here indicates the type of label template that is currently displayed in the main window.

Music Label 


Free Text Label 

Data Label 

Free Design Label 

Digital Image Label 

② File Button

Clicking the  button displays a menu of commands that you can use to perform the operations described below.

| When you want to do this: | Select this command: |
|--|----------------------|
| Create a new label [page 20] | New |
| Open an existing label data | Open |
| Save label data you are currently working on | Save |
| Import a text data file into a label | Import |
| Music Label See the following: | |
| <ul style="list-style-type: none"> • "Importing Data Created with a Previous Version" on page 31 • "Importing CD-Text Data for a Music Label" on page 26 • "Importing Media Player Data for a Music Label" on page 27 • "Importing Easy CD Creator Data for a Music Label" on page 29 | |
| Data Label or Digital Image Label See the following: | |
| <ul style="list-style-type: none"> • "Importing Data Created with a Previous Version" on page 31 • "To import a folder name" on page 30 • "To import file names" on page 30 | |
| Free Text or Free Design Label See the following: | |
| <ul style="list-style-type: none"> • "Importing Data Created with a Previous Version" on page 31 • "Importing CD-Text Data for a Music Label" on page 26 • "Importing Media Player Data for a Music Label" on page 27 • "Importing Easy CD Creator Data for a Music Label" on page 29 • "To import a folder name" on page 30 • "To import file names" on page 30 | |


| | |
|---|-------------------------------|
| Output a list of file names on a printer (page 35) | Create Data Index File |
| Quit the CD/DVD LABEL PRINTER application | Exit |
| Click a file name to display the corresponding label data. Note that only the last five files you have saved appear in this list. | Documents |

③ **Advanced Settings Button**

Displays a dialog box for more advanced printing and phrase settings (page 61).

④ **Help Button**

Displays help.

Clicking the  button displays a menu of commands that you can use to perform the operations described below.

- Display online help
- Access the TDK Website
- Display version information about the software

⑤ **Assistant Button**

Displays an Assistant window in the upper right corner of the main window.

This button is displayed on the music, data, and digital image label templates only.

⑥ **Minimize Button**

Minimizes the main window into the menu bar.

⑦ **Exit Button**

Quits the CD/DVD LABEL PRINTER application.

⑧ **Printing Pattern Panel**

This panel shows the location and orientation of the printing on the currently selected label. Click this panel when you want to change the location and orientation of the printing.

⑨ **Text Layout Panel**

This panel shows the currently selected text layout. Click this panel when you want to change the text layout.

⑩ **Image Button**


Displays a dialog box for selecting graphic images (page 41).

⑪ **Font Button**

Displays a dialog box for selecting the font type, attributes, and size.

⑫ **Magnifying Glass Button**

Displays a dialog box with an enlarged preview image.

- You can print the displayed label by clicking the **Print** button on the dialog box.
- To close the dialog box, click **Close** or .

⑬ **Label Input Boxes**

These boxes are for inputting label text, either manually or by importing it. The text you input immediately appears in the preview image on the screen.


The type of label input boxes that appear on the main window depend on the type of label template.

⑭ **Print Button**

Click to start a print operation.

⑮ **Label Preview Image**

You can use this image to get an idea of what your label will look like, before you actually print it.

⑯ **Eject Button** 

Opens the disc tray. This button performs the same operations as the Eject button on the front of the printer.

Important!

The **Eject** button is disabled while a printing operation is in progress.

Importing Text Data

Importing data helps to eliminate the need for inputting text by hand. The following describes the type of text data you can import into labels.

Music Labels

CD-Text data, or track name and other data created by Media Player or Easy CD Creator

Data Label or Digital Image Label

File names and folder names

You can also import text data you created using a previous version of TDK CD/DVD LABEL PRINTER application and convert it to LPCW-100 format.

Important!


- You will not be able to import CD-Text if your CD drive does not support CD-Text reading.

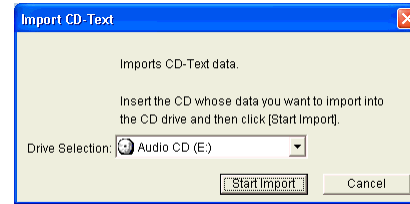
Importing CD-Text Data for a Music Label

Before getting started, be sure you have the disc whose CD-Text data you want to import on hand.

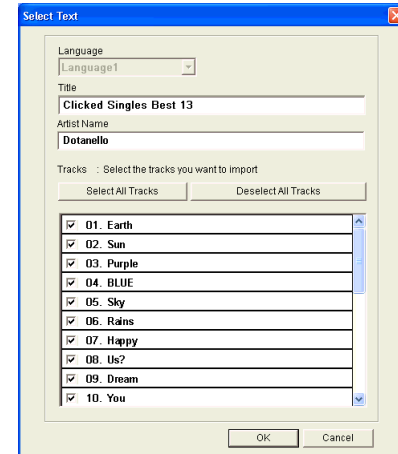
What is CD-Text?

CD-Text is text data on a CD that provides the disc title, artist names, track names, and other information. You can import such text using the CD/DVD LABEL PRINTER application and incorporate it into music labels. Note that some CDs may not contain CD-Text data.

1. On the music label template main window, click the  button.
2. Click **Import** and then **Import CD-Text**.
This displays a dialog box for selecting the drive where the CD that contains the text is located.



3. Set the disc whose data you want to read into the CD drive of your computer; confirm that the correct drive name is displayed in "Drive Selection" and then click the **Start Import** button.



- Language: If the disc whose CD-Text data you are importing has more than one language versions, you will be able to select from up to eight different languages. The selection is dimmed if the disc supports only one language.

Important!

The CD/DVD LABEL PRINTER application supports display of English, Japanese, Korean, and Chinese. Note, however, that your system may not be able to display Japanese, Korean and Chinese correctly if it is not configured for the special characters used by these languages.

- Title: This is the title of the disc.
- Artist Name: This is the name of the artist.
- Tracks: These are the titles of the songs on the disc.
- Select All Tracks: Click here to select all of the track names.
- Deselect All Tracks: Click here to deselect all of the selected track names.
- If you do not want a particular song title to be imported into the label input boxes, uncheck it.

4. After checking the track names in the label input boxes, click **OK**.

The CD-Text data is displayed in the label input boxes and the label preview image.

Important!

Depending on the type of disc you are trying to import from, you may not be able to import CD-Text data correctly.

Importing Media Player Data for a Music Label

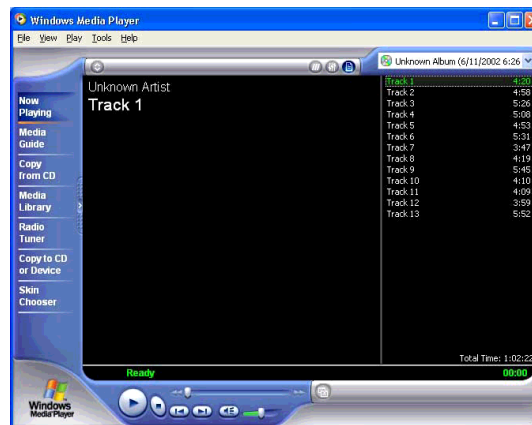
What is Media Player?

- Media Player is an application that lets you playback and manage multimedia files that are on your computer or the Internet. CD/DVD LABEL PRINTER application lets you import play lists created using Media Player. This capability is supported for data created using Media Player 7.0 or higher.
- Screen shots shown in this manual are based on Media Player for Windows XP.

Note

Screen contents and operational procedures may be slightly different for other supported Windows versions.

1. Start up Media Player.



2. Place the disc that contains the play list data you want to import into the CD drive of your computer.


3. After importing the track list, select **Export Playlist to File...** from the File menu, and save data to a playlist file (a file with the file name extension ".asx").

With Media Player 7.0, it is not necessary to copy the music.

Note

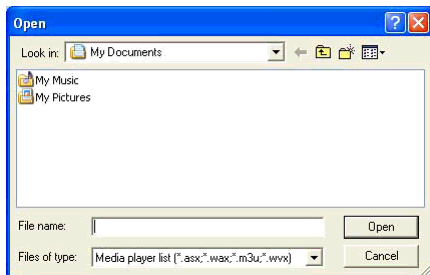
See Media Player online help for full details about its operation.

4. Start up the CD/DVD LABEL PRINTER application.

5. On the music label main window, click the  button.

6. On the menu that appears, click **Import** and then **Import Media Player Track Data**.

This displays a dialog box for opening a file.

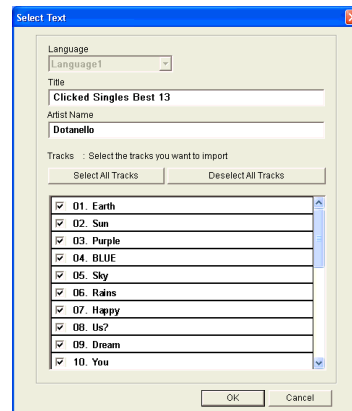


7. Select the playlist you created in step 3, and then click **Open**.

A dialog box for selecting the specific text you want to import appears after all the text on the CD is read.

Note

In some cases, you may not be able to import title and artist name data from a playlist file created using Media Player Version 8 or higher.



8. After checking the song titles in the label input boxes, click **OK**.

The data you import appears in the label import boxes and the preview image.

Importing Easy CD Creator Data for a Music Label

Note

Easy CD Creator

- Easy CD Creator is CD-R and CD-RW writing software. CD/DVD LABEL PRINTER application supports project lists created using Easy CD Creator for incorporation into a music label. This capability is supported for data created using Easy CD Creator 4.0 and 5.0.
- All the screen shots shown in this manual are from Easy CD Creator 5.0.


Important!

- Only project lists created for a music CD can be opened with CD/DVD LABEL PRINTER application.
- Import of project file created by adding an audio file to a track from a computer hard disk is not imported.
- Import of Easy CD & DVD Creator 6 is not supported.

1. Start up Easy CD Creator.
2. Place the disc that contains the data you want to import into the CD drive of your computer.
3. Use Easy CD Creator to save the project list.
This saves the project list.

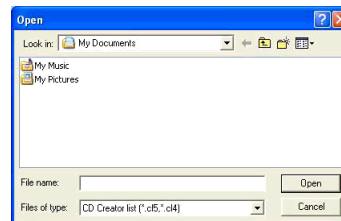
Note

See Easy CD Creator user documentation and online help for details about its operation.

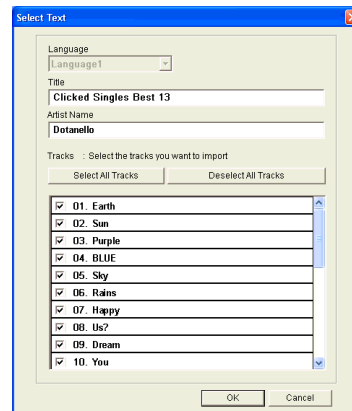
4. Start up CD/DVD LABEL PRINTER application.
5. On the music label template main window, click .

6. On menu that appears, click **Import** and then **Import Easy CD Creator Project List**.

This displays a dialog box for opening a file.



7. Select the project list you create in step 3, and then click **Open**. A dialog box for selecting the specific text you want to import appears after all the text is imported.




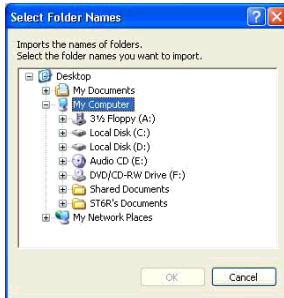
8. After checking the song titles in the label input boxes, click **OK**.
The data you import appears in the label import boxes and the preview image.

Importing File and Folder Name for a Data Label or Digital Image Label

Use the following procedures to import a folder name and file names for data label or digital image label.


To import a folder name

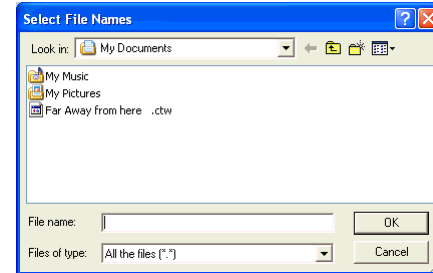
1. On the data label template or digital image label template main window, move the cursor to the label input box where you want to import the folder name, and then click .
2. Click **Import** and then **Import Folder Name**.
This displays a dialog box for selecting a folder.



3. Select the folder name you want to import, and then click **OK**.
The folder name you import appears in the label input box and the preview image.

To import file names

1. On the data label template or digital image label template main window, move the cursor to the label input box where you want to import the file names, and then click .
2. Click **Import** and then **Import File Name**.
This displays a dialog box for selecting files.




3. Select the names of the files you want to import, and then click **OK**.
The file names you import appear in the label input box and the preview image.

Note

- You can select a range of file names by clicking the name at one end of the range to select it, and then holding down your PC keyboard's **Shift** key as you click the name at the other end of the range.
- You can select multiple file names that are not next to each other by holding down your PC keyboard's **Ctrl** key as you click them.
- Note that even when there are multiple file names selected, only one file name appears in the **Title**.

Importing Data Created with a Previous Version

Perform the following steps to import data from a file that was created using a previous version CD/DVD LABEL PRINTER application, and convert it to CD/DVD LABEL PRINTER application version 2.0 format. This procedure supports conversion and import of files whose names end with the extension “.ctp” or “.ctw”.

1. On the main window, click .
2. On the menu that appears, point to **Import** and then click **Import LABEL PRINTER Data**.

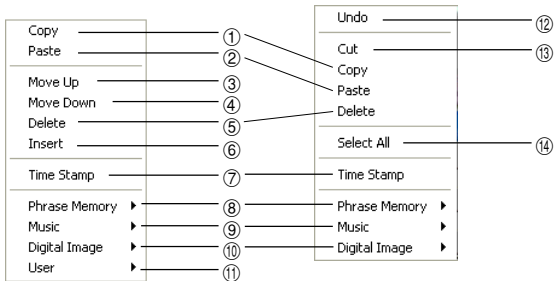
Important!

- This displays a dialog box of precautions you need to observe when importing data. Carefully read the precautions before you proceed.
- If you have the CD/DVD LABEL PRINTER application configured so precautions are not displayed (page 62), a dialog box for selecting a file to import appears instead. In this case, you should proceed directly to step 4.

3. Click **Next**.
This displays a dialog box for selecting a file to import.
4. Select the file you want to import, and then click **Open**.
This converts the data and displays it in the main window.

Useful Text Input Functions

Right-clicking the CD/DVD LABEL PRINTER application main window displays a shortcut menu of commands that come in handy during text input.




Before text editing

When text has
been edited

- ① **Copy**
Copies the selected text to the clipboard.
- ② **Paste**
Pastes the contents of the clipboard at the current cursor position.
- ③ **Move Up**
Moves the line that is currently selected in a label input box one line up.
- ④ **Move Down**
Moves the line that is currently selected in a label input box one line down.
- ⑤ **Delete**
Deletes the line or text string selected in a label input box.

- ⑥ **Insert**
Inserts a new line above the one that is currently selected in a label input box.
- ⑦ **Time Stamp**
Stamps the current date into the label input box.
The date that is stamped is the one being kept by your PC's clock.
- ⑧ **Phrase Memory**
Shows a list of preset phrases. Clicking a phrase inserts it at the current cursor position.
- ⑨ **Music**
Displays a list of preset phrases you can input into a music label template label input box. Clicking a phrase inserts it at the current cursor position.
- ⑩ **Digital Image**
Displays a list of preset phrases you can input into a digital image label template label input box. Clicking a phrase inserts it at the current cursor position.
- ⑪ **User**
Shows a list of preset phrases registered by you. Clicking a phrase inserts it at the current cursor position. See page 62 for information about registering preset phrases.
- ⑫ **Undo**
Undoes the last operation.
- ⑬ **Cut**
Cuts selected text and places it onto the clipboard.
- ⑭ **Select All**
Selects all the text in a line.

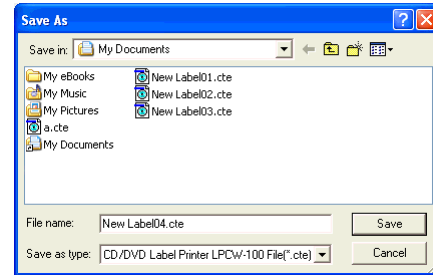
Saving Label Data

1. Click the  button.
2. On the menu that appears, click **Save**.
This displays a dialog box for saving label data.



- **Save:** This button appears if this is the first time you are saving the label data. Clicking this button saves the data, assigning the title name as the file name. If the label data you are editing has already been saved, this button name changes to **Overwrite**. Clicking **Overwrite** replaces the existing data with the version you are editing on your PC screen.
- **Save as:** This displays a dialog box for saving the label data under a different file name.
- **Cancel:** This closes the dialog box without saving anything.

3. Click **Save As**.
This displays the **Save As** dialog box.




4. Specify the folder in **Save in**, and type a file name into **File name**.
5. Click **Save** to save the data.

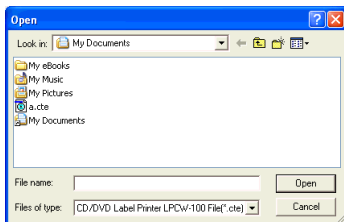
Opening a Label Data File

Perform the following steps when you want to open an existing label data file.

- See page 31 for information about opening a file created using previous version CD/DVD LABEL PRINTER application.
-

1. Click the  button.
2. On the menu that appears, click **Open**.

This displays a dialog box for selecting the file you want to open.



3. Select the name of the file you want to open, and then click **Open**.

The data in the file is displayed in the label input box and the label preview image.

Note


You can also open a label data file by clicking the **File Open** icon on the **Label Template Menu** (Page 20).

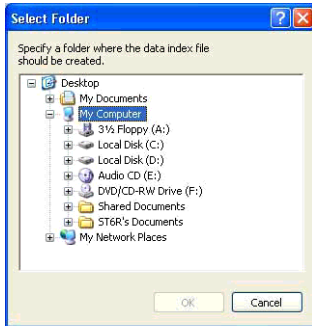
Opening a File Using Drag and Drop

- Dropping the icon of a file whose name ends with the extension “.cte” into the main window (page 23) or into the work area (page 47) opens the file.

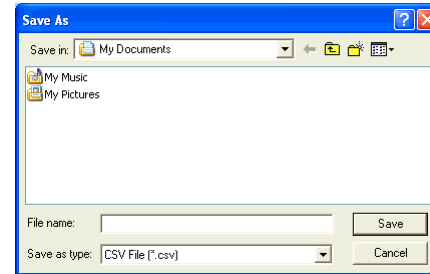
Creating a Data Index File

For a disc that contains so much data that it cannot fit on a label, you can use the following procedure to create a data index file that you can print out on a computer printer.

1. Click the  button.
2. On the menu that appears, click **Create Data Index File**.
This displays a dialog box for selecting a folder.



3. Select the folder for which you want to create a data index, and then click **OK**.
This displays the **Save As** dialog box.



4. Specify the folder in **Save in** and type a file name in to **File name**.
You can specify either CSV or TXT as the file type.
5. Click **Save** to save the data and create a data index file.

Note

You can open a data index file using standard word processor or spreadsheet software, and then print from there.

Configuring Layout Settings

You can control the appearance of your labels using the printing pattern and text layout panels, and the **Font** and **Image** buttons.

Any changes you make to a label are immediately reflected in the label preview image.

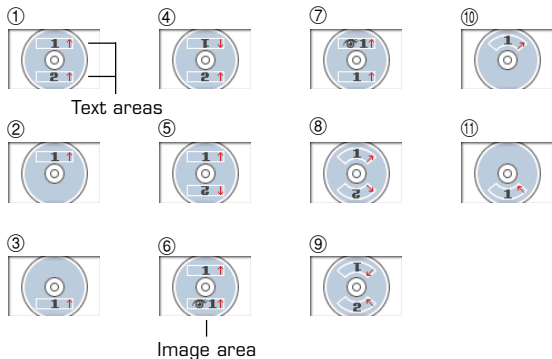
To configure layout settings

The print pattern controls the location and the orientation of the printing on a label.



Available Print Patterns

The 11 CD/DVD LABEL PRINTER print patterns are shown below.



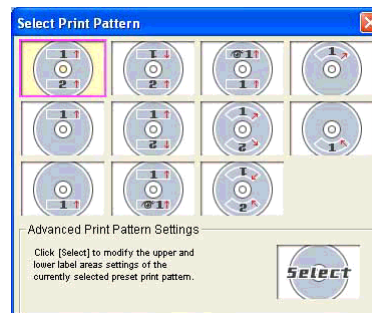
Important!

With print patterns ⑧ through ⑪, only one line of text can be printed in each label print area, regardless of the font size (1x, 2x, 3x) setting.

To configure print pattern settings

1. Click the  panel.


This displays a menu for selecting a print pattern.



2. Click the print pattern to which you want to change.

This causes the print pattern panel and the label preview image to change in accordance with the print pattern you selected.

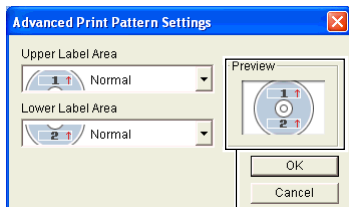
To modify a preset print pattern

1. On the main window, click .

This displays a dialog box for selecting a print pattern.

2. Click .

This displays a dialog box for configuring advanced print pattern settings.



The settings you configure are reflected here.

3. Click the **Label 1** and **Label 2** down arrow buttons and select the setting you want for each of the label areas, and then click **OK**.

This causes the print pattern panel and the label preview image to change in accordance with the settings you configured.

When you specify an image for **Label 1** or **Label 2**, you can specify insertion of Image 1 or Image 2. See **Inserting an Image into a Label** on page 41 for information about Image 1 and Image 2.

To specify this image: Select a print pattern that shows this:


Image 1 




Image 2 

Image 1, Image 2  

Configuring Text Layout Settings

You can select from a number of different layouts for the text on your labels.

About the Layout Panel

This Displays a menu of options.



| | Template | Item | Meaning |
|---|---------------------|--|--|
| ① | Music Label | Title Artist Name | Centered in the label area. |
| | Data Label | Title | |
| | Digital Image Label | Title | |
| ② | Music Label | Tracks | Indicates the following. <ul style="list-style-type: none"> • Text alignment (left, center, right) • Item per line (1 or 2) • Numbered/Non-numbered lines |
| | Data Label | Contents | |
| | Digital Image Label | Date Location Image Information | |

Available Text Layouts

The 10 CD/DVD LABEL PRINTER text layouts are shown below.



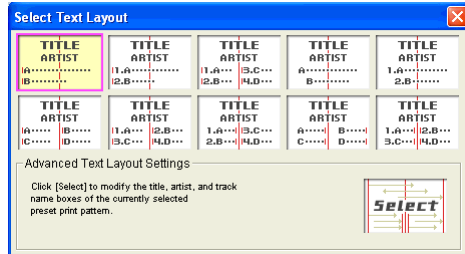
Note

Layouts ③ ④ ⑤ ⑥, ⑨, and ⑩ allow fewer characters per line than the other layouts.

To configure text layout settings

1. Click the  panel.


This displays a menu for selecting a text layout.



2. Click the text layout to which you want to change.

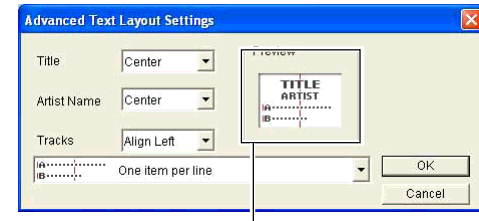
This causes the text layout panel and the label preview image to change in accordance with the text layout you selected.

To modify a preset text layout

1. On the main window, click .

2. Click .

This displays a menu for selecting a text layout.




The settings you configure are reflected here.

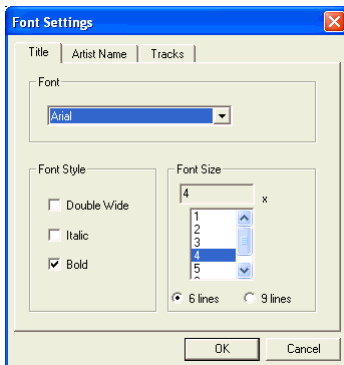
3. Configure the settings you want for each item, and then click **OK**. This causes the text layout panel and the label preview image to change in accordance with the text layout you selected.

Configuring Font Settings

Use the procedures in this section to control the font, attribute, and size settings of label text.

1. On the main window, click the  button.

This displays a dialog box for configuring font settings.

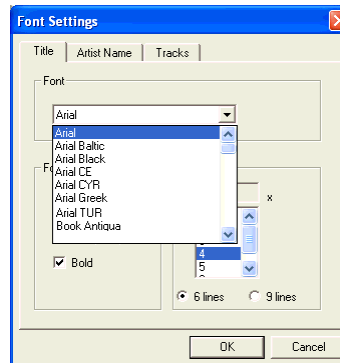


2. Select a tab and then make the settings you want.

The tabs that appear on the above dialog box depend on the type of label template you are using.

| When you are using this type of template: | These tabs are: |
|---|---|
| Music Label | Title, Artist Name, Tracks |
| Data Label | Title, Contents |
| Digital Image Label | Title, Date/Location, Image Information |

3. Click the ▼ button in **Font**.



4. Select the font you want from the list that appears.

5. In the **Font Style** group, select one or more of the available options (**Double Wide**, **Italic**, **Bold**).

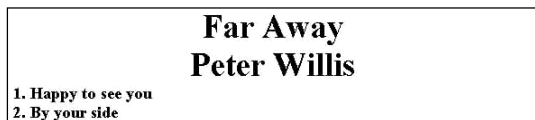
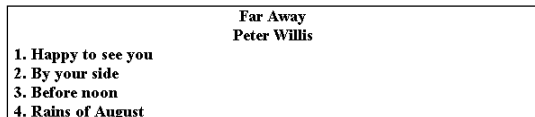
Note

The standard default is all font styles unchecked.

6. In the **Font Size** group, specify the number of lines and the font size.

| To do this: | Select this number of line option: |
|-------------------------|------------------------------------|
| Print 6 lines per label | 6 lines: |
| Print 9 lines per label | 9 lines: |

- The number of lines you can print per label also depends on the font size. If you have 6 lines specified and specify a 2× (2-line) font size for the title font and artist name on a music label, for example, you will be able to input up to two lines of song title text only (when using 1× text for song titles).



- With print patterns ⑧ through ⑩, only one line of text can be printed in each label print area, regardless of the font size (1×, 2×, 3×) setting. Font sizes 1× through 3× can be selected for a 6-line label, while font sizes 1× through 4× can be selected for a 9-line label.
- If you change a label from 9 lines to 6 lines, 7×, 8×, and 9× size fonts are changed automatically to 6×.

- With print patterns ①, ④, and ⑤ (page 36), selecting certain font sizes can cause text in the upper part of the label preview image to shift to the lower part, or text in the lower part of the image to shift to the upper part.

7. After completing the settings, click **OK**.



The settings you configure are reflected in the preview image on the main window.

Inserting an Image into a Label


You can use either of following two methods to input an image into a label.

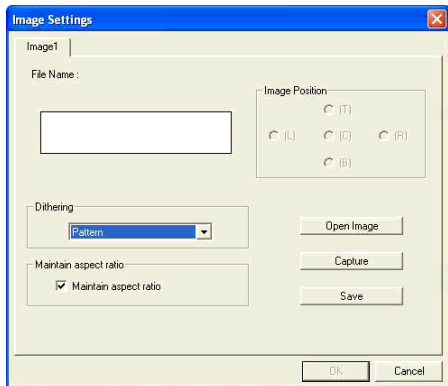
- Inputting an image from a file
- Capturing a PC screen image

Important!

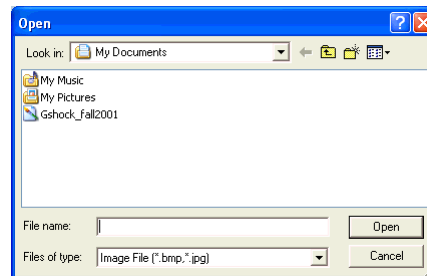
- To input an image into a label, you need to select print pattern ⑥ or pattern ⑦ (page 36), or a setting that is marked with  on the **Advanced Print Pattern Settings** dialog box (page 37).
- Even if you are inserting a color image, it is printed in monochrome in accordance with the "Dithering" settings. See page 44 for more information.
- To view the actual print image, click .

To input an image from a file

1. On the main window, click the  button.
This displays the Image dialog box.



2. If you are creating a label that allows input of multiple images, tap the tab for the image (**Image 1** or **Image 2**) you want to input.
3. Click **Open Image**.




4. Select the file name of the BMP or JPEG image you want to input, and then click **Open**.
This displays the selected image in color in the center of the **Image Settings** dialog box preview area.
5. After making sure the preview shows the image you want, click **OK**.
Note that the layout preview image on the main window shows the image you selected in monochrome.

Note

- See page 44 for information about monochrome conversion dithering settings.

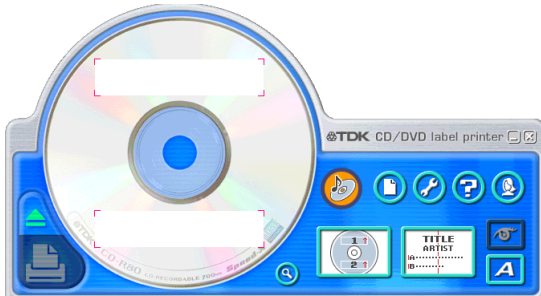
Capturing a PC Screen Image


Perform the following steps to capture a screen image and insert it into a label.

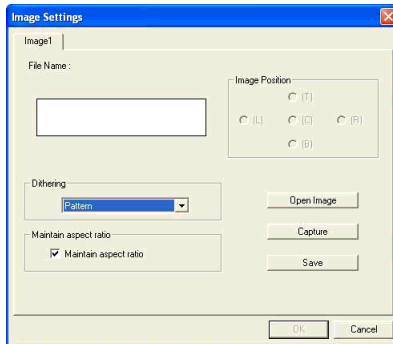
1. On the main window, click the  button.
This minimizes the main window.



2. Display the screen you want to capture.
3. On the Windows task bar, click **CD/DVD LABEL PRINTER**.
This displays the main window.



4. On the main window, click the  button.
This displays the Image dialog box.



5. Click **Capture**.
This minimizes the main window.

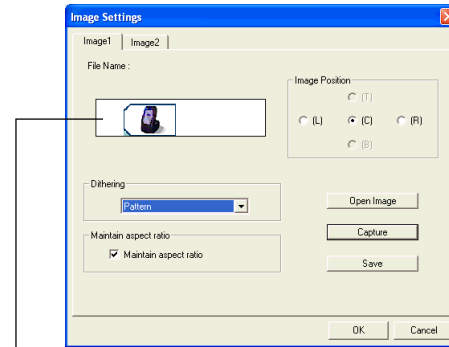
Note

To cancel the capture operation, press the **Esc** key or right-click your mouse.

6. Locate the mouse pointer at one of the corners of the area you want to select for capture. Holding down the left mouse button, drag the pointer to the corner that is diagonally opposite the one you started from.



This draws a selection boundary around the area. Guidelines also appear that correspond to the area of the layout size.



A color image of the selected area appears in the **Image Settings** dialog box preview area.

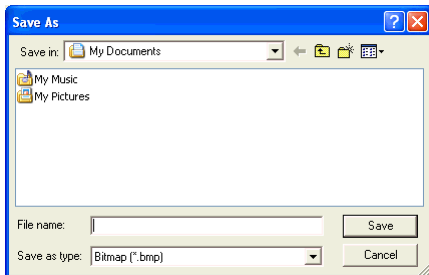
- After making sure the preview shows the image you want, click **OK**. Note that the layout preview image on the main window shows a monochrome version of the image you selected.

Note

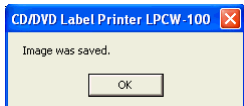
- See page 44 for information about monochrome conversion dithering settings.

To save a captured image to your PC's hard disc

- While the captured image is shown on the **Image Settings** dialog box, click **Save**.



- Specify the folder in **Save in** and type a file name into **File name**.
- Click **Save**.

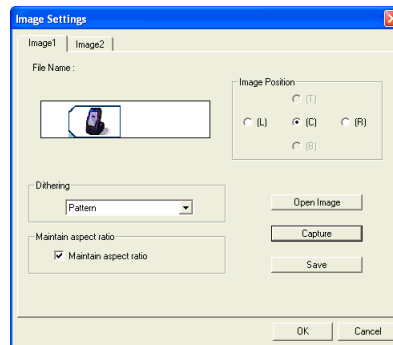


- Click **OK**.
Captured images are always saved in BMP format.

Controlling the Aspect Ratio of an Image

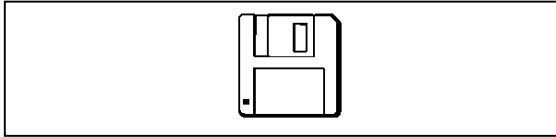
Perform the following steps to specify whether the aspect ratio should be maintained when the image is resized, and to specify the position of the image.

- While an image is displayed in the preview area of the **Image Settings** dialog box, select the **Maintain aspect ratio** setting you want.

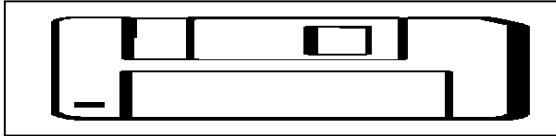


| When you want to do this: | Do this: |
|---|--|
| Enlarge or reduce the image to fit the label area while maintaining the ratio between the image's vertical and horizontal dimensions. | Select the Maintain aspect ratio check box. |
| Enlarge or reduce the image to fit the label area without maintaining the ratio between the image's vertical and horizontal dimensions. | Clear the Maintain aspect ratio check box. |

Maintain Aspect Ratio On




Maintain Aspect Ratio Off



Note that the **Image Position** settings appear dimmed and are not available when the **Maintain aspect ratio** check box is cleared.

2. While an image is displayed in the preview area of the **Image Settings** dialog box, select the setting you want under **Image Position**.
3. When all the settings are the way you want, click **OK**.
 - The settings you configure are reflected in the preview image on the main window.

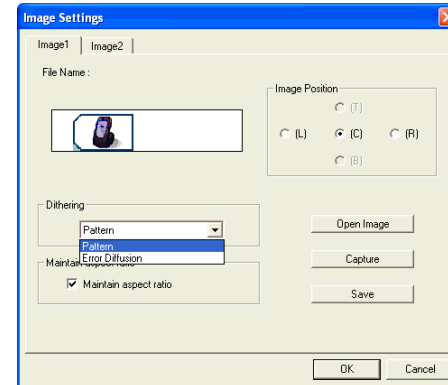
Note

To view the actual print image, click .

About color images...

When you insert a color image, it is automatically converted to a monochrome image. The colors of the image are expressed as different shades of gray.

1. While the image you inserted is displayed in the layout preview image, click the ▼ button in **Dithering**.



2. Select "Pattern" or "Error Diffusion" and then click **OK**.

The dithering setting you select is reflected in the label preview image on the screen.

Difference between Pattern and Error Diffusion Dithering

With both dithering methods and dark colors are printed blacker, while light colors are a lighter shade of gray. Compared with **Pattern** dithering, **Error Diffusion** takes longer, but the printout looks better.

Pattern



Error Diffusion



Creating an Original Label Layout

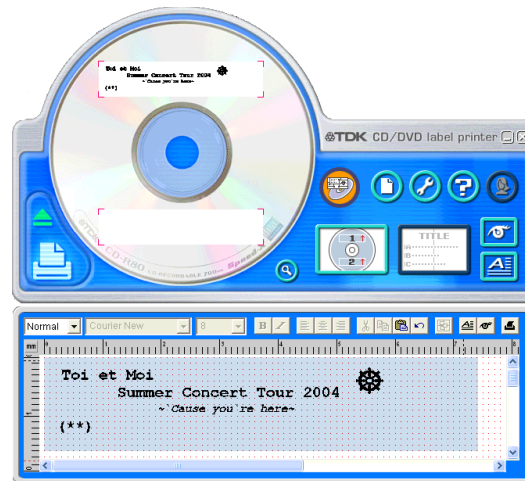
There are two templates for creating an original label layout: the Free Text label template and the Free Design label template. For details about more basic label creation procedures, see the steps under “Automated Label Layout”.

Free Text Label Template



- The Free Text label template lets you input text using many of the same techniques available on a word processor application.
- You can specify the font, font size, and other settings on a text string level. Images can be inserted as the background of a label (page 51), and you can even insert different images for the upper label area and the lower label area.

Free Design Label Template

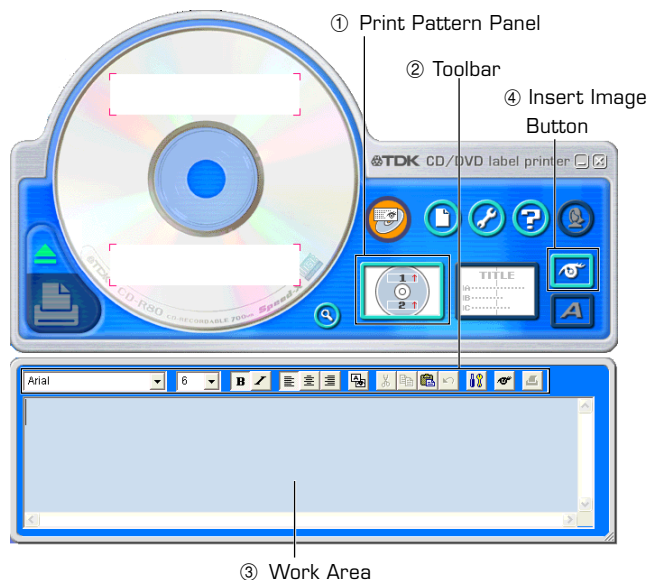


- The Free Design Label Template gives you maximum control over the appearance of the label you are creating.
- It lets you input text and images into individual fields, which you can then place in label areas as you like.
- You can have a total of 40 fields in the upper and lower label areas.

Free Text and Free Design Common Characteristics

- The following characteristics are common to both the Free Text label template and the Free Design label template.
- CD-Text, Media Player, and Easy CD Creator track name data, as well as file names and folder names can be imported into labels.
- Font and font size settings are configured using toolbar buttons.
- The **Text Layout** panel appears dimmed, which means it is not available.

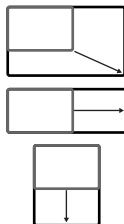
Free Text Label Template Main Window



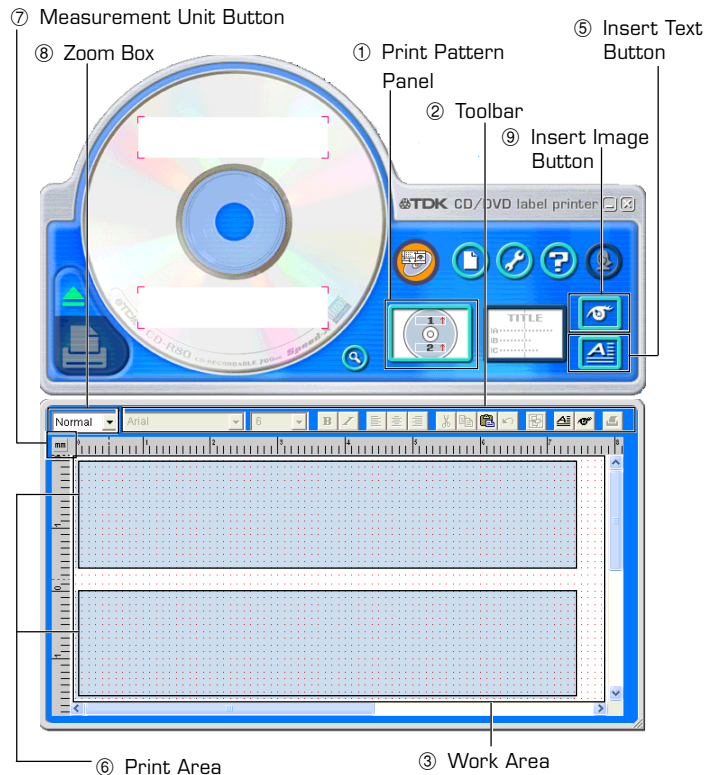
Resizing the Work Area

You can resize the work area by dragging its right side, bottom, or lower right corner.

- Resizing the work area while you are editing text inside of it cancels the editing operation.



Free Design Label Template Main Window



Free Design and Free Text Template Main Windows

Free Text Template

① Print Pattern Panel

This panel shows the location and orientation of the printing on the currently selected label. Click this panel when you want to change the text layout.

② Toolbar

Contains a selection of useful editing tools. Click a tool to use it. See “Toolbars” on the right for more information.

③ Work Area

This is the area where you layout the label.

④ Insert Image Button

Click to insert an image or a background image.

Free Design Template

See “Free Text Template” for information about ①, ②, and ③.

⑤ Insert Text Button

Click to insert a text field.

⑥ Print Area

Indicates the area within the work area that is actually printed. You can move the print area by dragging it.

Any text or images that are outside of the print area are not printed.

⑦ Measurement Unit Button

Shows the currently selected measurement unit.

Each click of the measurement unit button cycles through the units in the following sequence: mm (millimeters) → Pel (pixels) → inch → mm.

⑧ Zoom Box

Select once of the following options to change the size of the work area as described below.

Detailed: Displays the print area in actual size (100%).

Normal: Displays the print area as 62.5% its actual size.

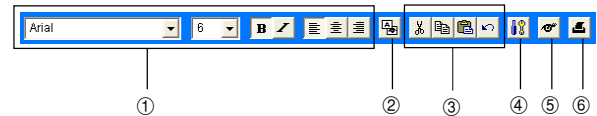
⑨ Insert Image Button

Click to insert a image field.

Toolbars

The following describes the tools that are available in the toolbars on the Free Text and Free Design label template main windows.

Free Text Templates



① Font Settings

Use these settings to select the font, font size, etc.

- The font size you select here is displayed in the work area when you print.

② Show Background Button

On the Free Text label template main window, clicking this button displays the selected background image.

③ Editing Tools

Use these tools to copy and paste selected text and fields (page 52).

④ Background Image Setting Button

On the Free Text label template main window, clicking this button displays a dialog box for configuring background image settings.

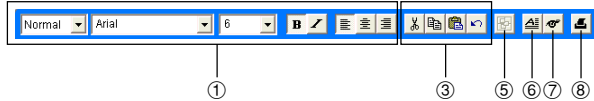
⑤ **Image Button**

Click this button to input an image or to select a background image (page 51).

⑥ **Print Button**

Prints the label (page 16).

Free Design Template



See "Free Text Template" for information about ① and ③.

⑤ **Layout Button**

Alignment

The commands in this submenu align fields on a reference field.

- Left Aligns the selected fields on their left sides.
- Center Horizontally Aligns the selected fields on their horizontal centers.
- Right Aligns the selected fields on their right sides.
- Top Aligns the selected fields on their tops.
- Center Vertically Aligns the selected fields on their vertical centers.
- Bottom Aligns the selected fields on their bottoms.

Uniform Spacing

- Vertical Arranges three or more fields so they are evenly spaced vertically.
- Horizontal Arranges three or more fields so they are evenly spaced horizontally.

Center

- Vertical Centers the selected fields vertically in the print area.

-Horizontal

Centers the selected fields horizontally in the print area.

Send

-To Front

Sends the selected field to the front of all the fields.

-To Back

Sends the selected field to the back of all the fields.

-Forward

Sends the selected field one level forward.

-Back

Sends the selected field one level back.

Resize

-By Width

-By Height

Makes all of the selected fields the same height and/or width.

-By Height and Width

Other

-Maximize

Enlarges the field so it fills the print area.

-Center

Moves the field to the center of the print area.

-Maintain Aspect Ratio and Center

Maximizes the field while maintaining its aspect ratio, and centers it in the print area.

⑥ **Text Input Button**

Inputs a text field (page 53).

⑦ **Image Button**

Inputs an image field (page 54).

⑧ **Print Button**

Prints the label (page 16).

Important!

Certain fonts and font size settings can cause poor printing results.

Configuring Font Settings (Free Text Template, Free Design Template)

This section describes how to configure font settings for text you input manually into the work area, or text you import.

You can select font, font size, font style, and text alignment from the toolbar.

Font Setting Tools



■ To specify the font

1. Input text into the work area.
2. Highlight the characters whose font setting you want to edit.
3. On the toolbar, click the down arrow button, and then select the font you want from the list that appears.
 - Your font selection is reflected in the work area and the preview image.

■ To specify the font size

1. Input text into the work area.
2. Highlight the characters whose font size you want to specify.
3. On the toolbar, click the down arrow button, and then select the font size you want from the list that appears.
 - Your font size selection is reflected in the work area and the preview image.
 - If the font size you want is not included in the list, select the font size box in the toolbar and type in the size you want.

■ To change font style settings

You can use the following procedure to italicize or bold text.



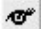


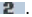
1. Input text into the work area.
2. Highlight the characters whose font style setting you want to change.
3. Click **B** to make the selected text bold, or **I** to make the text italic.
 - Your font style setting is reflected in the work area and the preview image.
 - Selecting bold text and clicking **B** or italicized text and clicking **I** removes the corresponding style and returns the text to normal.

■ To change the alignment of text

You can align text so it is left-aligned, centered, or right-aligned.

1. Input text into the work area.
2. Locate the cursor inside the text whose alignment you want to change.
3. Click **L** to left-align the text, **C** to center the text, or **R** to right-align the text.
 - The alignment you specify is reflected in the work area and the preview image.

Inserting a Label Background Image (Free Text Layout)

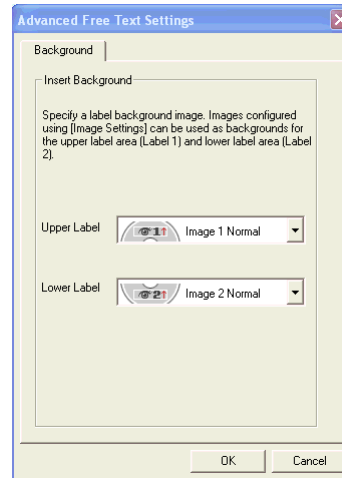
1. On the main window, click .
2. Click  or , and then select the image you want to insert.
 - The image appears in the preview image on the main window.
 - One image can be inserted per label area.
After you insert an image into print pattern , you cannot input text. To insert a label background image, choose  or .

Note

- See "Inserting an Image into a Label" on page 41 for information about inserting images.
- See "Configuring Layout Settings" on page 36 for information about print patterns.



To specify the image orientation

1. On the main window, click .
This displays the **Advanced Free Text Settings** dialog box.




2. Specify the orientation for the images in the upper label area and the lower label area, and then click **OK**.

To turn off display of background images

1. On the main window, click .
This turns off display of the background images. Clicking  again turns display of the background image back on.

Note

- Text overlaid on a background image can become distorted when printed. Because of this, we recommend that you lay out your label so the text is not overlaid on an image.
- Clicking  displays an enlarged preview image, which comes in handy when laying out label elements.

Fields (Free Design Template)

This section contains general information about fields. It also explains operations that are common to both text and image fields.

Field Types

A field is a kind of box you can insert into the work area to hold text or an image. Text goes into text fields, while images go into image fields.

Selecting a single field causes it to be enclosed with a gray selection boundary. Selection boundaries do not appear on printouts.

Text Field

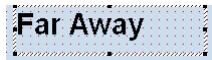


Image Field



■ Selecting a Field

Text Field: Click on the boundary of a field to select it. You can move or delete a field whose boundary appears as shown below.

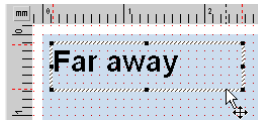


Image Field: Click anywhere inside an image field to select it.

An image field that has a light gray boundary around it can be moved or deleted.

Common Text Field and Image Field Operations

The following operations are the same for both text fields and image fields.

■ To move a field

Select the field and then drag it to the location you want.

Note

- For fine movement of a field, use your keyboard arrow keys. Each press of an arrow key moves the selected field one dot.



To delete a field

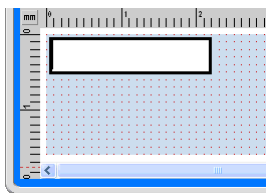
Select the field and then press the **Delete** key.

Inputting Text into a Text Field (Free Design Template)

The following describes how to input, edit, and delete text.

To input text manually

1. On the main window, click  or .
This inserts a text field into the upper label area.



2. Type in the text you want.

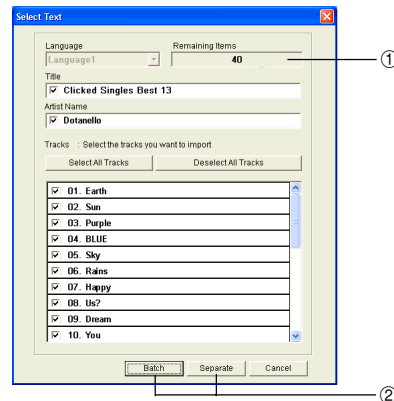
- For information about text editing, see "Configuring Font Settings" on page 50.
- To edit a text field that already contains text, double-click the field.

To input text imported from a file

Use this procedure below to import text from a CD-Text, Media Player, or Easy CD Creator file, and input it into a label.

See page 31 for information about converting and importing text data created using a previous version of TDK CD/DVD LABEL PRINTER application.

1. Using the procedure under "Importing Text Data" on page 26, import the text from a file.
A dialog box for selecting the specific text you want to import appears after all the text is imported.



- ① Indicates the number of fields that can still be inserted. A label can contain up to 40 fields total.
The **Separate** and **Batch** buttons appear dimmed and unavailable when there are 40 fields in a label.
- ② **Batch:**
Imports all selected items into a single field.
Separate:
Using this option imports only the titles, artist names, and track names whose check boxes are selected into individual fields.

2. Click **Batch** or **Separate**.

- The text you input here appears in the work area and the label preview image.

Note

- When you import file names and folder names, click **OK**.
- When you import file names and folder names, each name is inserted into its own field.

To configure font settings for the text in a field

1. Highlight the text whose font settings you want to change.
2. Use the toolbar to configure font, font size, and font style settings.

Note

See “Toolbars” on page 48 for more information.



To delete a text field

1. Select the text field you want to delete.
2. Press the **Delete** key on your computer keyboard.
This deletes the text field.

Inserting an Image into a Label (Free Design Template)

Use the procedures in this section to insert an image into a label and to delete a label image.

To insert an image into a label

1. On the main window, click  or , configure settings for the image you want to insert, and then click **OK**.
 - This inserts the image in the center of the work area.
 - If the selected image is larger than the work area, it is resized to fit while maintaining the relationship between its horizontal and vertical dimensions (aspect ratio).

To delete an image field

1. Select the image field you want to delete.
2. Press the **Delete** key on your computer keyboard.
This deletes the image field.

Resizing a Field (Free Design Template)

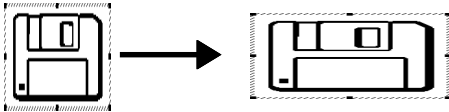
Use the procedures in this section when you want to change the size of a field.

Important!

Note that the result obtained when you resize a field depends on whether it is a text field or an image field.

1. Select the field you want to resize so it is enclosed by a gray selection boundary.
2. Use one of the techniques described below to drag one of the four corner handles on the boundary to resize the field.

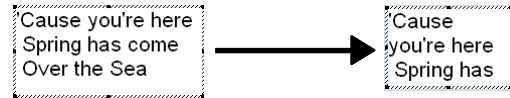
Example: Simple drag operation



- **Simple Drag Operation**
Simply dragging a corner handle resizes the field, without maintaining its aspect ratio.
- **[Shift] + Drag**
This resizes the field while maintaining its aspect ratio. The field is enlarged or reduced with the corner that is diagonally opposite or reduced with the corner that is diagonally opposite from the one you are dragging fixed.
- **[Shift] + [Ctrl] + Drag**
This also resizes the field while maintaining its aspect ratio. The field is enlarged and reduced with its center fixed.

Important!

Resizing a text field does not affect the size of the text inside the field.



Aligning and Resizing Fields (Free Design Template)

A selection of useful commands makes it possible to instantly position fields on a label and to make multiple fields the same size (See page 49).

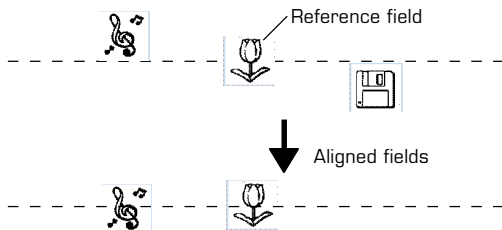
Note

You can use the following procedures for both text fields and image fields.

■ What is alignment?

The CD/DVD LABEL PRINTER application lets you align multiple fields vertically or horizontally in relation to a reference field that you specify.

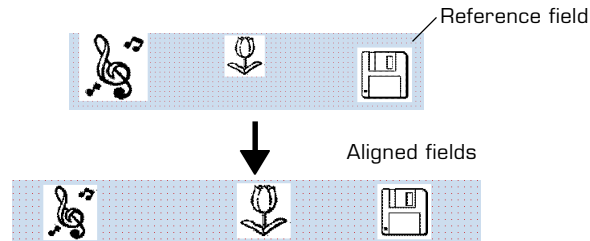
Example: To center fields vertically



■ To make multiple fields the same size

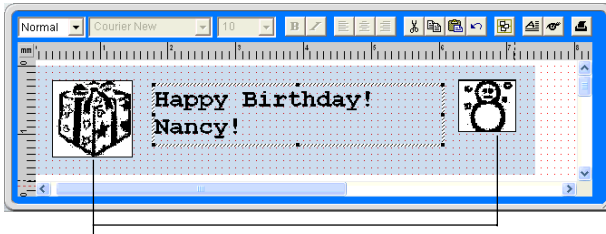
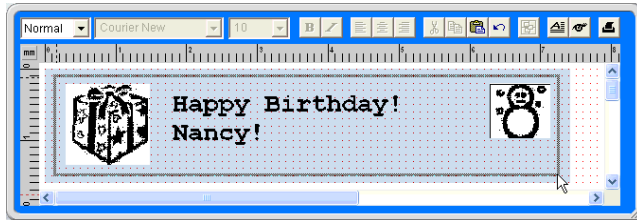
You can resize multiple fields so they are the same size as a reference field that you specify.

Example: Resizing fields by height and width



To align fields

1. Drag the mouse on the label so the fields you want to align or resize are enclosed in the selection boundary.



Thin boundary

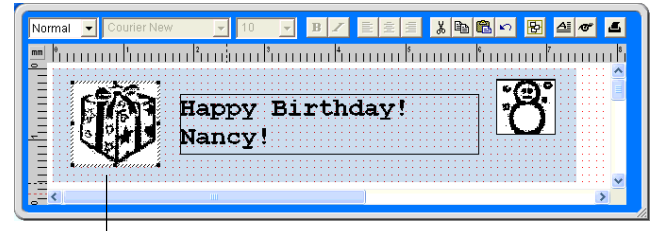
Selection boundary

- The reference field is surrounded by a relatively thick gray boundary, while other selected fields are surrounded by thin boundaries.


NOTE

- You can also select and deselect fields using **Shift** + click.
- To deselect all of the currently selected fields, simply click anywhere outside of the selected fields.

2. To make a different field the reference field, hold down the **Ctrl** key as you click the new reference field.



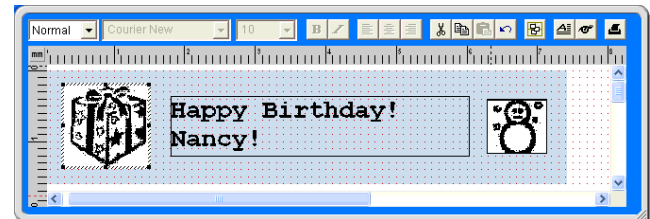
This is the reference field.

3. Click the  button.
This displays a menu.

Note


- See "Toolbars" on page 49.

4. On the menu, select **Alignment**.
5. On the submenu that appears, select the command you want.
The selected fields are aligned in accordance with the command you select.



The above shows the result of **Alignment - Center Vertical**


Configuring Field Properties (Free Design Template)

Clicking the  button and then **Properties** displays a dialog box that you can use to change the properties of a field.

Note

The unit of measurement (millimeters, pixels, inches) used on the **Field Properties** dialog box is the same as that selected with the ruler unit of measurement unit button (Page 48).

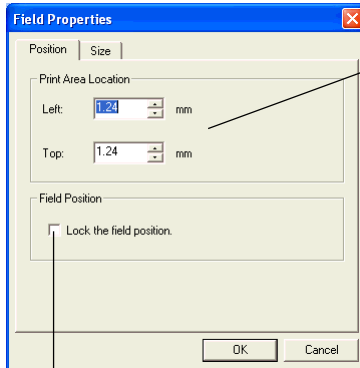
To reposition and resize a field

1. Select the field you want to reposition. On the main window, click .

Note

If multiple fields are selected, only the reference field (the one with the gray selection boundary) can be repositioned.

2. On the menu that appears, click **Properties**.
This displays the **Field Properties** dialog box.



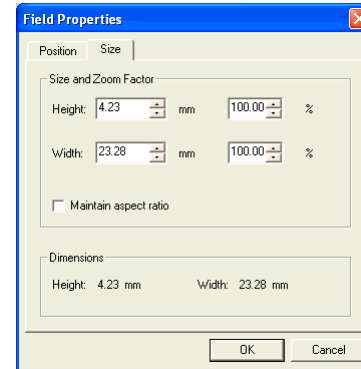
Print Area Location

These values indicate the relative location of the print area from the upper left corner of the work area. Changing the values in the box causes the print area to move to the new location.

Select this option to lock the field, which make it impossible to move it.

3. Input the values you want. The settings you configure are reflected in the preview image on the main window.

4. Click the **Size** tab.



Size and Zoom Factor

Inputting a value in one box automatically changes the value in the other box.

Maintain aspect ratio

When this check box is selected, the field is resized while maintaining the relative ratio between its vertical and horizontal dimensions. When this checkbox is cleared, a field can be resized by changing the horizontal or vertical dimension only.

Dimensions:

These are the dimensions of the image when it was originally captured or imported from a file.

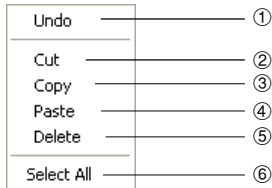
5. Input the values you want and then click **OK**. The settings you configure are reflected in the preview image on the main window.

Useful Text Input Functions (Free Text Template, Free Design Template)

This section describes various useful functions you can access on the shortcut menu that appears when you right-click on the Free Text label template or Free Design label template.

Right-clicking the mouse while the cursor is located in the work area displays one of the shortcut menus shown below.

When a field is not selected

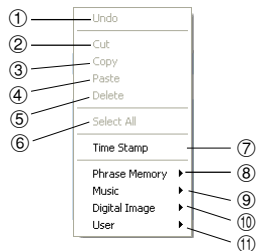


When a field is selected

Free Text Template

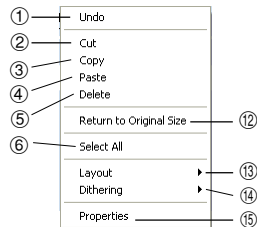
Free Design Template

(When a text field is selected.)



Free Design Template

(When an image field is selected.)



- ① **Undo**
Undoes the last operation you performed.
- ② **Cut**
Cuts the currently selected field from the label and places it onto the clipboard.
- ③ **Copy**
Copies the currently selected field and places it onto the clipboard.
- ④ **Paste**
Inserts the clipboard contents into the work area.
- ⑤ **Delete**
Deletes the selected field.
- ⑥ **Select All**
Selects all of the fields in the work area.
- ⑦ **Time Stamp**
Stamps the current date into the work area. The date that is stamped is the one being kept by your PC's clock.
- ⑧ **Phrase Memory**
Phrase Memory lets you select and input preset words and expressions from a menu.
- ⑨ **Music**
Displays music phrases and expressions. Select the phrase you want from the submenu that appears to input it.
- ⑩ **Digital Image**
Displays digital image phrases and expressions. Select the phrase you want from the submenu that appears to input it.

⑪ **User**

Shows a list of preset phrases registered by you. Clicking a phrase inserts it at the current cursor position. See page 62 for information about registering preset phrases.

Note

See the “Phrase Library List” on page 65 for more information.

⑫ **Return to Original Size (Image Field only)**

This command change the size of the field so the image within it is the same size it was when captured or imported.

⑬ **Layout**

Use the commands on the submenus to align fields and to move them forward and back.

Note

- See “Aligning and Resizing Fields” on page 56.

⑭ **Dithering (Image Field Only)**

Use the submenu that appears to select either **Pattern** or **Error Diffusion** for the dithering method.


⑮ **Properties**

Displays a dialog box that shows the properties of the selected field. You can also configure position and size settings on the properties dialog box.


Note

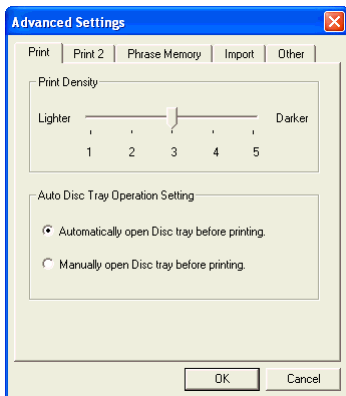
See “Configuring Field Properties” on page 58 for more information.

Configuring Advanced Settings

On the main window or the print dialog box, click . This displays a dialog box for making advanced label creation or print settings.

To configure advanced print settings

1. On the main window or Print dialog box, click the  button.
2. Click the **Print** tab or the **Print 2** tab.



Print Tab

Print Density

Drag the slider left and right to adjust the print density.

Auto Disc Tray Operation Setting

Use this setting to specify whether the disc tray should open automatically or if you prefer to open it manually when starting a printing operation.

Print 2 Tab

Print Confirmation

Use this setting to specify whether printing should start immediately, or if a confirmation message should be displayed before printing of each label area starts.


Printer Orientation

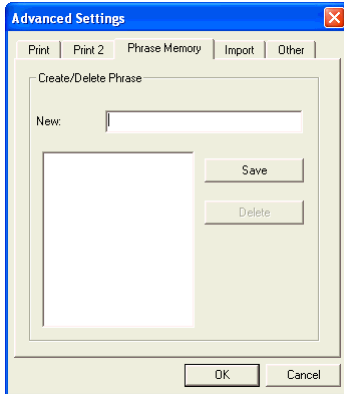
Use these settings to specify the printer orientation, and to specify whether or not the printer orientation confirmation message should appear whenever the CD/DVD LABEL PRINTER application is started up.

3. After everything is the way you want, click **OK**.

Registering and Deleting a Phrase Memory Entry

You can register frequently used terms and phrases for instant recall whenever you need them. See “Useful Text Input Functions” on pages 32 and 59 for information about using phrase.

1. On the main window or Print dialog box, click the  button.
2. Click the **Phrase Memory** tab.



To register a new phrase


Type the phrase you want to register into the text box, and then click **Save**.

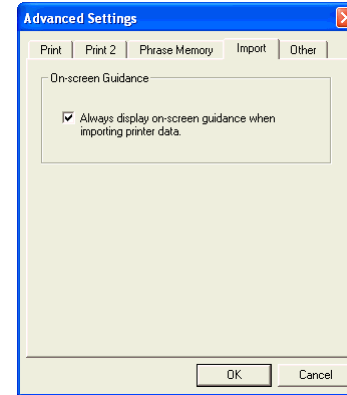
To delete a phrase

Click the phrase you want to delete so it is highlighted, and then click **Delete**.

3. After everything is the way you want, click **OK**.

To turn display of data import precautions on and off

1. On the main window or Print dialog box, click the  button.
2. On the dialog box that appears, click the **Import** tab.




On-screen Guidance

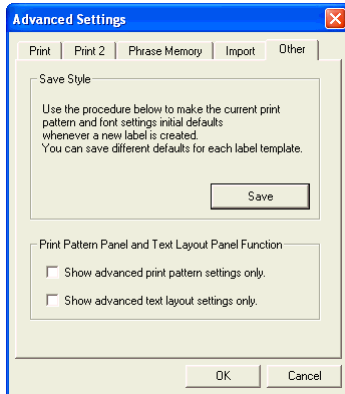
Select the checkbox of this option if you want precautions to appear during the procedure under “Importing Data Created with a Previous Version” on page 31.

3. After everything is the way you want, click **OK**.

To configure advanced layout settings

Use the following procedure to save the settings of a layout you create, and to control what appears when you click the **Print Pattern** panel and **Text Layout** panel.

1. On the main window or print dialog box, click the  button.
2. Click the **Other** tab.



Save Style

Clicking the **Save** button saves the current print pattern, text layout, and font settings and makes the initial default settings.

- The settings you save will be applied the next time you create a label using the same template.
- You can save one setup per label template.

Important!

The **Text Layout** panel (page 37) and font button settings cannot be saved for the Free Text layout and Free Design layout.

Print Pattern Panel and Text Layout Panel Function

Select the check box next to **Show advanced print pattern settings only** if you want the **Advanced Print Pattern Settings** dialog box (page 37) to appear when you click the **Print Pattern** panel. The **Select Print Pattern** dialog box appears when this check box is cleared. Select the check box next to **Show advanced text layout settings only** if you want the **Advanced Text Layout Settings** dialog box (page 38) to appear when you click the **Text Layout** panel. The **Select Text Layout** dialog box appears when this check box is cleared.


3. After everything is the way you want, click **OK**.

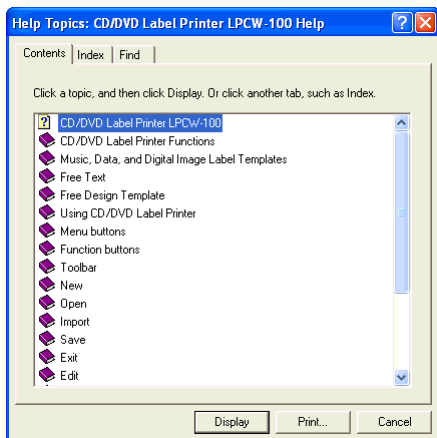
Using Help

The online help feature lets you access the following type of information.


- Information about functions and supplementary information
- Software version information
- Connection on the TDK Website

To use Help

1. On the main window, click the  button.
2. Click **Help**.



3. Use standard Windows online help procedures to find the information you need.

You can also obtain assistance by accessing the TDK Website. While your computer is connected to the Internet, click  and then click **TDK Website**. This will take you to the TDK Website where you will find the latest news and other information about TDK products.

Phrase Library List

The following is a list of the built-in phrase library contents. See page 32 and 59 for information about using phrase.

Phrase Memory

- TEL:
- FAX:
- POST CODE:
- Extension:
- Direct:
- E-mail:
- http://
- Contact:
- Manager:
- Term:
- Issue Date:

Digital Image

- Date Recorded:
- Recorded By:
- Recorded At:
- Image Quality Setting:
- High:
- Normal:
- Economy:

Music

- Big Hit
- Hit Album
- Best Of
- Omnibus
- My Favorites

Troubleshooting

Check the contents of this troubleshooting guide whenever you experience operational problems with this CD/DVD LABEL PRINTER application. If you can't find the information you need here, check the printer User's Guide.

| Symptom | Possible Cause | Recommended Action |
|---|---|---|
| ● Nothing works. | The software is not installed. | Disconnect the USB cable and re-install the software. Installing the software also installs the driver. After re-installing, connect the USB cable again. |
| | The USB cable, AC adaptor, or power cord is not connected. | Ensure that all connections are correct and secure. See the printer User's Guide for more information. |
| | Your PC is not turned on. | Start up your PC. |
| <ul style="list-style-type: none"> ● Printing is not clear. ● Printing is poor quality. ● Printing is too light. | Any of the following can interfere with proper printing. <ul style="list-style-type: none"> • A disc label that is not smooth. • A disc label that has a design or lines printed on it. • A disc label that support ink jet printing only. | See the separate "Quick Start Guide" sheet for information about recommended media. |
| | Dirty print head | Clean the print head.* |
| | Improper print density. | Adjust the print density. (page 61). |

| Symptom | Possible Cause | Recommended Action |
|---|--|---|
| ● Printing color is different from what I expected. | The color of the final printout is affected by both the color of the ink ribbon and the color of the disc you are printing on. | Try using a lighter color disc or a darker color ink ribbon. |
| ● Printing is misaligned. | Improper alignment of the disc in the tray. | Use the printing guide when aligning the disc in the tray (page 18). |
| ● Cannot print. | The ink ribbon is used up. | Replace the ink ribbon cassette with a new one.* |
| | The driver is not installed correctly. | <ol style="list-style-type: none"> 1. [Start], [Control Panel], [System], and then [Device Manager]. 2. Check if [CW100 Device] is displayed under [Universal Serial Bus controllers]. <ul style="list-style-type: none"> ● If you see a question mark (?) or exclamation point (!) next to [CW100 Device], disconnect the USB cable from your computer, and re-install this CD/DVD LABEL PRINTER application. Installing the application also installs the driver. After reinstalling, reconnect the USB cable. |

| Symptom | Possible Cause | Recommended Action |
|---|--|--|
| ● The last part of input data does not print. | Too many characters per line | Use a smaller font size or reduce the number of characters per line. |
| | Too many lines | Use a smaller font size or reduce the number of lines. |
| ● Cannot import CD-Text. | The music CD you are trying to import from does not have any CD-Text on it. | Type text manually into the label input boxes, or find a Website on the Internet that contains the data you want to include on the label, copy it, and then paste it into the label input boxes. |
| | Your CD drive does not support reading of CD-Text. | |
| ● Cannot create a data index file. | The specified drive or media where you are trying to save the data is write protected or full. | Remove the write protection or delete data you no longer need to make room from the data index file. Other options include switching to a different drive or different media. |

*See the printer User's Guide.

Error Messages

| Message | Recommended Action | Page |
|---|---|---------------|
| The label file cannot be imported because it is corrupted or an unsupported format. | Specify a proper label file format. | pages 26 – 31 |
| The text data cannot be imported because it is corrupted or an unsupported format. | Create a new song title list and try again. | page 27 |
| There is still a Disc in the printer. Remove the Disc to quit. | Remove the disc and then quit. | page 16 |
| Eject could not be performed because the printer is turned off or it is not connected to the computer. Correct the problem and then try ejecting again. | Make sure the printer is connected correctly to your PC. | * |
| | Make sure the printer is connected correctly to a power source. | |
| The printer is turned off or it is not connected to the computer. | Make sure the printer is connected correctly to your PC. | * |
| | Make sure the printer is connected correctly to a power source. | |

*See the printer User's Guide.

| Message | Recommended Action | Page |
|---|---|---------|
| The printer is turned off or it is not connected to the computer. Check to make sure that the printer model specified by the print settings is correctly connected to the computer. After correcting the problem, try printing again. | Make sure the printer is connected correctly to your PC. | * |
| | Make sure the printer is connected correctly to a power source. | |
| There is no ink ribbon cassette loaded in the printer. Load an ink ribbon cassette and then try printing again. | Correctly load an ink ribbon cassette into the printer and try printing again. | * |
| The ink ribbon cassette is empty. Replace the ink ribbon cassette and then try again. | Replace the ink ribbon cassette. | * |
| There is not enough ink ribbon cassette for the next printing. Replace the ink ribbon cassette after you finish the current printing. | Replace the ink ribbon cassette before performing the next printing. | * |
| There is no Disc loaded in the printer. Load a Disc and then try printing again. | Make sure that a disc is correctly set on the tray. | page 16 |
| Version error. This file cannot be read with this application. | Specify a proper label file format. This application cannot directly read files saved with the LPCW-50 application. Use this application's Import function to import LPCW-50 data. | page 31 |



TDK Recording Media Europe S.A.

Z.I. Bommelscheuer

P.O. Box 120

L-4902 Bascharage

Grand Duchy of Luxembourg